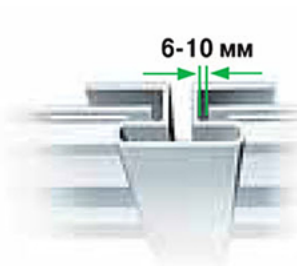


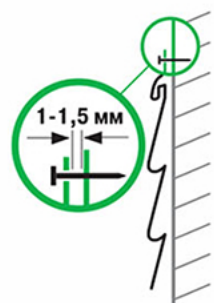


## EAST BUILDING vinyl siding Installation Instructions

# ONLYDA PVC



Vinyl siding is nailed so that not to interfere with possible expansion / compression



Do not nail the siding too tightly. Make panels possible to move.



The nail should be in the center of the slots.



Nail straightly & directly



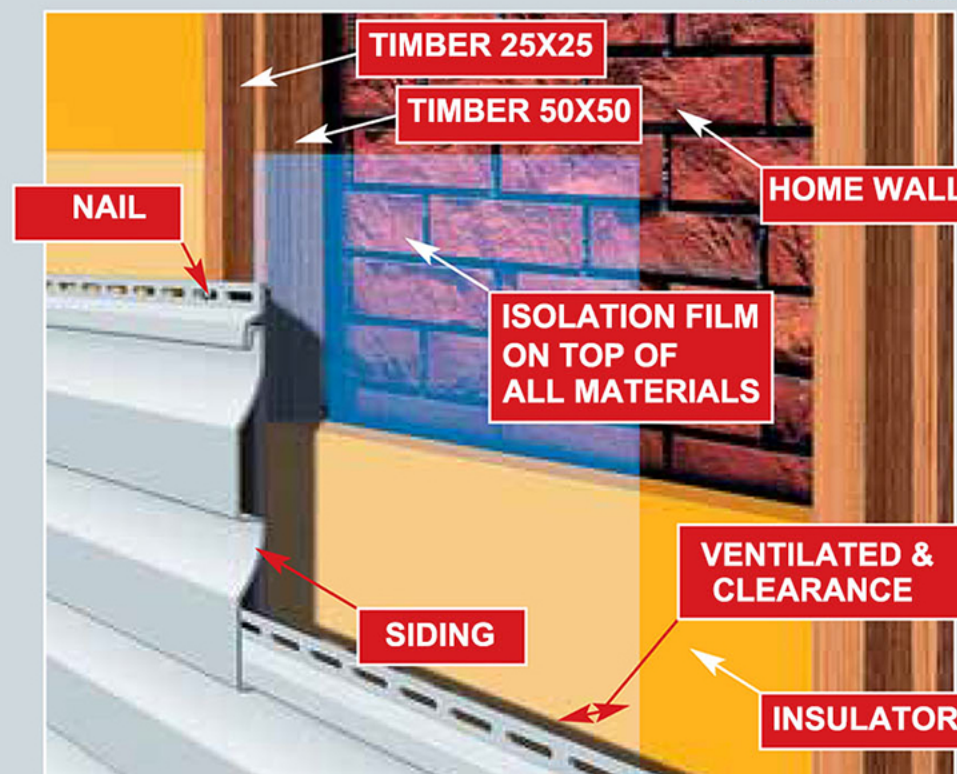
Do not tighten the siding when fastening. The strong tension of the siding panel may change its shape and cause incorrect connection of the panels.



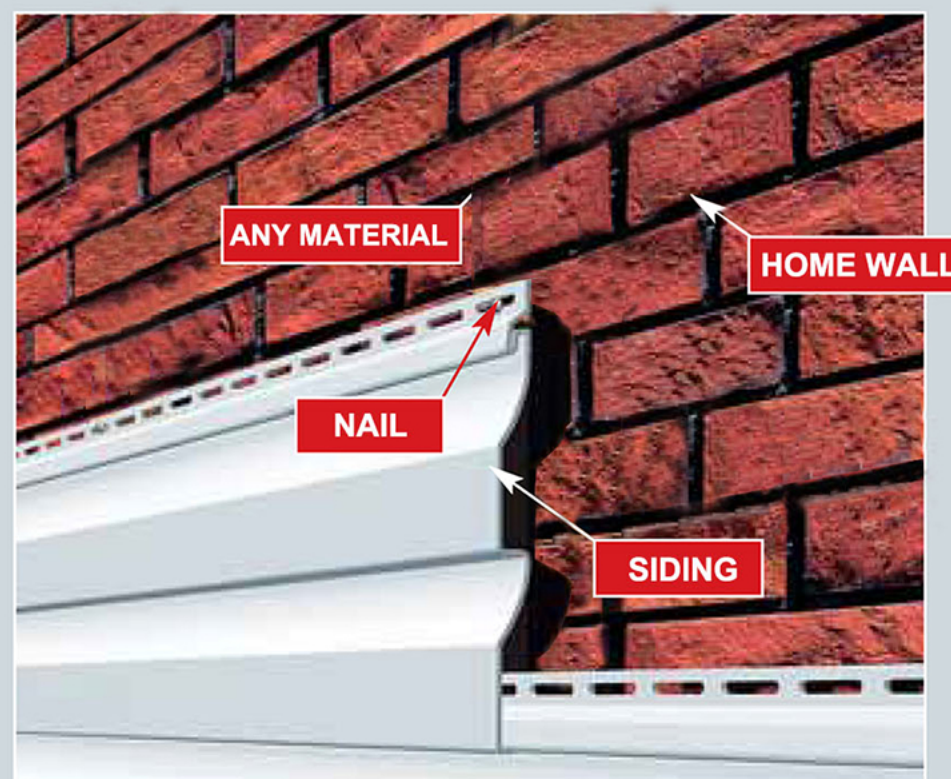
Correctly arrange the nails.

Nails are recommended to drive at a distance of 30-40 cm from each other.

with insulation



without insulation



от -50 до +60°C

УСТОЙЧИВ К УЛЬТРАФИОЛЕТУ

ГРУППА ГОРЮЧЕСТИ – Г2

ВЫДЕРЖИВАЕТ  
МЕХАНИЧЕСКИЕ НАГРУЗКИ

ЭКОЛОГИЧЕСКИ  
БЕЗОПАСЕН

СОХРАНЯЕТ ВНЕШНИЙ ВИД  
НЕ МЕНЕЕ 50-ти ЛЕТ

Since 2005

www.eastbuilding.net



# Installation instructions

## SURFACE PREPARATION

1. Remove all shutters, drainpipes, grilles, and any other fixtures which are on the surface of wall, intended for installing the siding.  
Install the timber over the entire surface of the wall.
3. Timber humidity should not exceed 15-18%. They must be treated with antiseptic liquid
4. For installing the siding, the timber must be installed vertically, at a distance of 30-40 cm from each other. They should be installed around windows, doors, other openings, at all corners, at the bottom and at the top of the siding installation area. Do not connect the vertical timber with each other horizontally, this can lead to a violation of ventilation under the siding.
5. Start strip - Install the starting strip at the bottom of the wall. Make sure there is enough space for the other profiles. Nail the start strip parallelly with the window.
6. Exterior corner - The Exterior corner should be 6-8mm away from the eave, nail it from the upside. The first nail should at the top of the first hole, others at the interspaces of the holes. Apart 200mm from each nail. The installation of Interior corner is the same to exterior corner, both them must be installed before vinyl siding panels.
7. J-strip - Embowel the window. Be sure J-strips are a little longer than the four edge of the window, cut the surplus part as 45-degree at the four angles of the window, join the four J-Shape Strips to be a rectangular around the window.
8. Connection strip: Join two pieces of vinyl siding panels if necessary.
9. End strip: cut the redundant part of last siding panel, fix with J-shape strip and end strip, which looks more beautiful. Or directly fix with end strip



Install first piece by start strip



Install last piece



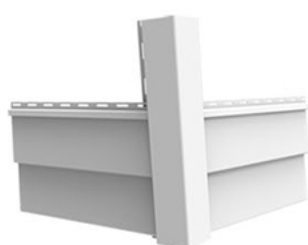
Install J-strips with panels



Install J strip with soffit



Emboss the windows



Install exterior corner



Install Interior corner



Install connection strip



Connect panels without



Install F strip with fascia

Factory address: No.12, Jinniu Road, Jianshan new Ind. Est., Haining, Zhejiang province, China.

Office address: No.79, Xiaxierli Centre District, Haichang Street, Xiashi, Haining, Zhejiang Province, China

Tel/Fax: +86 573 8776 8732 Email: [info@eastbuilding.net](mailto:info@eastbuilding.net), Whatsapp: +86 137 5078 4689

[www.eastbuilding.net](http://www.eastbuilding.net)